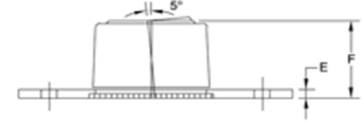
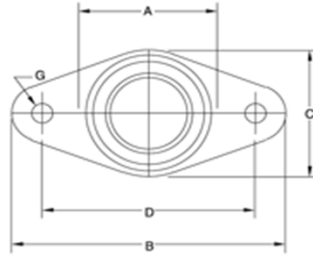




FLANGE-MOUNT, SELF-ALIGNING DELRIN BEARINGS



Spyraflo's Flange-Mount, Self-Aligning, Delrin® Bearings are widely used in applications requiring assembly access or have field service needs. The self-clinching, $\pm 5^\circ$ self-aligning bearings are securely mounted in a low-profile, 2-bolt hole steel flange.

Custom flanges to suit a particular application requirement are available.

Delrin® acetyl bearings are an economic solution for light load / low speed rotary and linear applications.

- Maintenance free.
- Suitable for rotational, linear and oscillatory motion.
- Special flange design service available.
- Also available in Delrin®-AF for higher speed applications.

Part Number	ID Actual Min. Max	A	B	C	D	E	F	G	Max. Speed r.p.m.	Max. Load lbf/N	Weight oz/g
BFM-187-A	0.1885 - 0.1905	0.41	1.80	0.87	1.21	0.05	0.28	0.22	2,010	47	0.30
BFM-250-A	0.2510 - 0.2530	0.41	1.80	0.87	1.21	0.05	0.28	0.22	1,503	63	0.30
BFM-312-A	0.3135 - 0.3155	0.59	2.10	1.19	1.53	0.06	0.39	0.22	1,205	114	0.50
BFM-375-A	0.3760 - 0.3780	0.66	2.10	1.19	1.53	0.06	0.45	0.22	1,002	155	0.50
BFM-500-A	0.5010 - 0.5040	0.84	2.35	1.43	1.78	0.06	0.65	0.22	752	308	1.00
BFM-625-A	0.6260 - 0.6280	1.09	2.35	1.56	1.78	0.09	0.77	0.22	601	436	1.40
BFM-750-A	0.7510 - 0.7530	1.28	2.34	1.85	1.78	0.09	0.89	0.22	501	625	1.80
BFM-1000-A	1.0010 - 1.0030	1.60	3.25	2.00	2.00	0.09	0.90	0.29	376	698	2.99
BFM-6M-A	6.020 - 6.070	11.0	45.0	22.0	31.0	1.2	6.9	5.5	1,591	264	6
BFM-8M-A	8.030 - 8.080	17.0	53.0	30.0	39.0	1.6	10.0	5.5	1,193	511	12
BFM-10M-A	10.030 - 10.080	17.0	53.0	30.0	39.0	1.6	11.4	5.5	955	725	13
BFM-12M-A	12.030 - 12.080	22.0	60.0	36.5	45.0	1.6	16.5	5.5	795	1,295	21
BFM-15M-A	15.030 - 15.080	28.0	60.0	39.7	45.0	2.3	19.4	5.5	636	1,831	40
BFM-16M-A	16.030 - 16.080	28.0	60.0	39.7	45.0	2.3	19.4	5.5	597	1,953	40
BFM-18M-A	18.030 - 18.080	33.0	60.0	47.0	45.2	2.3	22.4	5.5	530	2,627	52
BFM-20M-A	20.030 - 20.080	33.0	60.0	47.0	45.2	2.3	22.4	5.5	477	2,919	50
BFM-25M-A	25.030 - 25.080	40.6	83.0	50.8	63.5	2.3	22.9	7.3	382	3,057	83

For more information about Spyraflo bearings visit www.spyraflo.com.