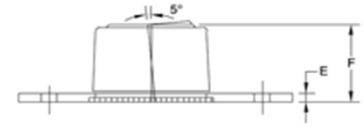
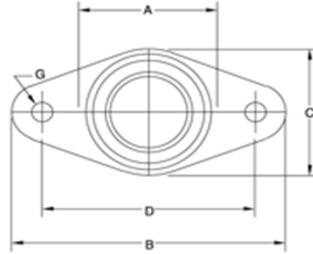




FLANGE-MOUNT, SELF-ALIGNING NEEDLE ROLLER BEARINGS



Spyraflo's Flange-Mount, Self-Aligning, Needle-Roller Bearings are widely used in applications requiring assembly access or have field service needs. The self-clinching, $\pm 5^\circ$ self-aligning bearings are securely mounted in a low-profile, 2-bolt hole steel flange. Alternatively, Non-Aligning, Flange-Mount, Needle-Roller Bearings offer a simple bolt-on solution for bearing mounting challenges.

Custom flanges to suit a particular application requirement are available.

Needle-Roller Bearings are an economic solution for medium load / high speed applications.

- Requires a hardened shaft.
- Suitable for rotational motion.
- Pre-Lubricated.
- Electrically conductive.
- Special flange design service available.
- Non-Aligning option.

| Part Number | Shaft Dia. | | A | B | C | D | E | F | G | Max. Speed r.p.m. | Max. Load lbf/N | Weight oz/g |
|-------------|------------|---------|------|------|------|------|------|------|------|----------------------|--------------------|----------------|
| | Min. | Max | | | | | | | | | | |
| BFM-125-N | 0.1247 | 0.1250 | 0.53 | 1.80 | 0.88 | 1.22 | 0.05 | 0.40 | 0.22 | 31,500 | 360 | 0.40 |
| BFM-187-N | 0.1872" | 0.1875" | 0.66 | 2.10 | 1.19 | 1.53 | 0.06 | 0.46 | 0.22 | 21,000 | 430 | 0.70 |
| BFM-250-N | 0.2495 | 0.2500 | 0.66 | 2.10 | 1.19 | 1.53 | 0.06 | 0.46 | 0.22 | 44,000 | 600 | 0.70 |
| BFM-312-N | 0.3120 | 0.3125 | 0.84 | 1.78 | 1.25 | 1.22 | 0.09 | 0.64 | 0.22 | 35,500 | 600 | 1.20 |
| BFM-375-N | 0.3745 | 0.3750 | 0.84 | 1.78 | 1.25 | 1.22 | 0.09 | 0.64 | 0.22 | 29,500 | 600 | 1.10 |
| BFM-500-N | 0.4995 | 0.5000 | 1.09 | 2.34 | 1.56 | 1.78 | 0.09 | 0.77 | 0.22 | 22,000 | 950 | 2.00 |
| BFM-625-N | 0.6245 | 0.6250 | 1.28 | 2.34 | 1.85 | 1.78 | 0.09 | 0.89 | 0.22 | 16,000 | 1,150 | 3.00 |
| BFM-750-N | 0.7495 | 0.7500 | 1.63 | 3.25 | 2.00 | 2.50 | 0.09 | 0.90 | 0.28 | 13,100 | 1,330 | 5.00 |
| BFM-4M-N | 3.992 | 4.000 | 17.0 | 53.0 | 30.0 | 39.0 | 1.5 | 11.6 | 5.5 | 41,000 | 1,780 | 20 |
| BFM-6M-N | 5.992 | 6.000 | 17.0 | 53.0 | 30.0 | 39.0 | 1.5 | 11.6 | 5.5 | 35,000 | 2,550 | 20 |
| BFM-8M-N | 7.991 | 8.000 | 22.0 | 45.0 | 31.8 | 30.9 | 2.3 | 16.3 | 5.5 | 28,000 | 2,550 | 34 |
| BFM-10M-N | 9.991 | 10.000 | 22.0 | 45.0 | 31.8 | 30.9 | 2.3 | 16.3 | 5.5 | 23,000 | 2,550 | 31 |
| BFM-12M-N | 11.989 | 12.000 | 28.0 | 60.0 | 39.6 | 45.2 | 2.3 | 19.5 | 5.5 | 20,000 | 4,000 | 60 |
| BFM-15M-N | 14.989 | 15.000 | 33.0 | 60.0 | 47.0 | 45.2 | 2.3 | 22.5 | 5.5 | 16,000 | 4,800 | 86 |

For more information about Spyraflo bearings visit www.spyraflo.com.