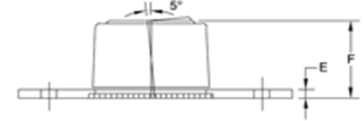
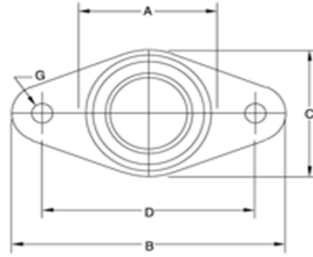




FLANGE-MOUNT, SELF-ALIGNING BRONZE BEARINGS



Spyraflo's Flange-Mount, Self-Aligning, SAE-840 Bronze Bearings are widely used in applications requiring assembly access or have field service needs. The self-clinching, $\pm 5^\circ$ self-aligning bearings are securely mounted in a low-profile, 2-bolt hole steel flange.

Custom flanges to suit a particular application requirement are available.

SAE-840 Oil Impregnated Bronze Bearings are an economic solution for medium load / medium speed applications, 25% oil volume within the porous structure of the spherical insert ensures long bearing life.

- Maintenance free.
- Electrically conductive.
- Suitable for rotational and oscillatory motion.
- Special flange design service available.

Part Number	ID Actual Min. Max	A	B	C	D	E	F	G	Max. Speed r.p.m.	Max. Load lbf/N	Weight oz/g
BFM-187-B	0.1883 - 0.1888	0.53	1.80	0.88	1.22	0.05	0.40	0.22	20,310	190	0.40
BFM-250-B	0.2508 - 0.2513	0.53	1.80	0.88	1.22	0.05	0.40	0.22	15,270	190	0.40
BFM-312-B	0.3133 - 0.3140	0.66	2.10	1.19	1.53	0.06	0.46	0.22	12,240	270	0.70
BFM-375-B	0.3758 - 0.3765	0.66	2.10	1.19	1.53	0.06	0.46	0.22	10,180	320	0.60
BFM-500-B	0.5010 - 0.5017	0.84	2.35	1.44	1.78	0.06	0.64	0.22	7,640	600	1.10
BFM-625-B	0.6260 - 0.6270	1.09	2.35	1.56	1.78	0.09	0.77	0.22	6,110	890	2.00
BFM-750-B	0.7510 - 0.7520	1.28	2.35	1.85	1.78	0.09	0.89	0.22	5,090	1,280	2.80
BFM-875-B	0.8760 - 0.8780	1.60	3.25	2.00	2.50	0.09	0.90	0.29	4,700	2,500	4.75
BFM-1000-B	1.0010 - 1.0030	1.60	3.25	2.00	2.50	0.09	0.90	0.29	4,580	2,900	4.25
BFM-4M-B	4.0100 - 4.0300	13.50	45.0	22.3	31.0	1.2	10.2	5.50	21,300	530	12.00
BFM-6M-B	6.020 - 6.040	13.5	45.0	22.3	31.0	1.2	10.2	5.50	16,110	790	11
BFM-8M-B	8.020 - 8.040	17.0	53.0	30.2	39.0	1.5	11.5	5.50	12,120	1,190	19
BFM-10M-B	10.020 - 10.040	17.0	53.0	30.2	39.0	1.5	11.5	5.50	9,700	1,490	17
BFM-12M-B	12.030 - 12.050	21.5	60.0	36.5	45.2	1.5	16.3	5.50	8,060	2,530	32
BFM-15M-B	15.030 - 15.050	28.0	60.0	39.7	45.2	2.3	19.4	5.50	6,460	3,750	58
BFM-16M-B	16.030 - 16.050	28.0	60.0	39.7	45.2	2.3	19.4	5.50	5,500	4,000	58
BFM-18M-B	18.030 - 18.050	32.5	60.0	47.0	45.2	2.3	22.5	5.50	5,380	4,800	86
BFM-20M-B	20.030 - 20.050	32.5	83.0	51.0	63.5	2.3	22.5	7.00	5,200	4,800	91
BFM-25M-B	25.020 - 25.070	40.6	83.0	50.8	63.5	2.3	22.9	7.25	4,800	12,000	122

For more information about Spyraflo bearings visit www.spyraflo.com.