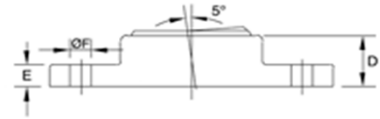
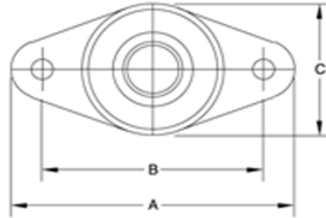


HOUSING-FLANGE, SELF-ALIGNING NEEDLE-ROLLER BEARINGS



Spyraflo Aluminum Housing-Flanges combine the light weight, clean lines, and dimensional consistency of sintered aluminum with $\pm 5^\circ$ self-aligning and the high speed / medium load capability of Needle-Roller Bearings. Spyraflo Needle-Roller Housing-Flanges are able to carry higher loads than larger, heavier cast iron ball bearing assemblies. The profile and performance of Spyraflo Housing-Flanges, is a very cost effective alternative to often expensive Housing-Flange mounting challenges. Needle-Roller Bearings are an economic solution for medium load / high speed applications.

- Requires a hardened shaft.
- Suitable for rotational motion.
- Pre-Lubricated
- Electrically conductive.
- Clean lines and Lightweight.

Part Number	Shaft Dia.		A	B	C	D	E	F	Max. Speed r.p.m.	Max. Load lbf/N	Weight oz/g
	Min.	Max									
HF2-250-N	0.2495	0.2500	2.25	1.75	1.13	0.44	0.19	0.28	44,000	490	1.00
HF2-312-N	0.3120	0.3125	2.25	1.75	1.13	0.63	0.19	0.28	35,500	340	1.40
HF2-375-N	0.3745	0.3750	2.25	1.75	1.13	0.63	0.19	0.28	29,500	340	1.30
HF3-500-N	0.4995	0.5000	3.25	2.50	1.63	0.78	0.25	0.41	22,000	850	3.40
HF3-625-N	0.6245	0.6250	3.25	2.50	1.63	0.88	0.25	0.41	17,600	700	3.80
HF5-750-N	0.7495	0.7500	5.00	4.00	2.63	0.91	0.38	0.56	14,700	2,000	10.00
HF2-6M-N	5.992	6.000	57.0	44.5	28.5	11.0	5.0	7.0	35,000	2,180	28
HF2-8M-N	7.991	8.000	57.0	44.5	28.5	15.9	5.0	7.0	28,000	1,510	40
HF2-10M-N	9.991	10.000	57.0	44.5	28.5	15.9	5.0	7.0	23,000	1,510	37
HF3-12M-N	11.989	12.000	82.5	63.5	41.5	20.0	6.5	10.5	20,000	3,800	96
HF3-15M-N	14.989	15.000	82.5	63.5	41.5	22.0	6.5	10.5	16,000	3,110	108
HF3-16M-N	15.989	16.000	82.5	63.5	41.5	22.0	6.5	10.5	16,000	3,110	105
HF5-18M-N	17.989	18.000	127.0	101.5	66.5	23.0	9.5	14.5	14,700	9,600	280

For more information about Spyraflo bearings visit www.spyraflo.com.