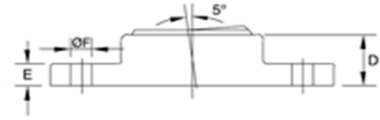
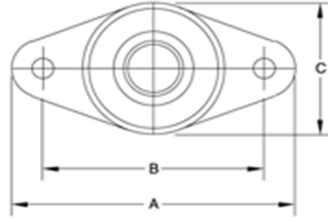




HOUSING-FLANGE, SELF-ALIGNING PTFE IMPREGNATED BRONZE BEARINGS



Spyraflo Aluminum Housing-Flanges combine the light weight, clean lines, and dimensional consistency of sintered aluminum with $\pm 5^\circ$ self-aligning and the high load / medium speed capability of PTFE Impregnated Bronze. Spyraflo PTFE Impregnated Bronze Housing-Flanges are able to carry much higher loads than larger, heavier cast iron ball bearing assemblies. The profile and performance of Spyraflo Housing-Flanges, is a very cost effective alternative to often expensive Housing-Flange mounting challenges.

PTFE Impregnated Bronze Bearings are an economic solution for high load / medium speed applications; impervious to dirt and dust.

- Maintenance free.
- Suitable for rotational and oscillatory motion.
- High / Low Temperature options available.
- Electrically conductive.
- Clean lines and Lightweight.

Part Number	Shaft Dia.		A	B	C	D	E	F	Max. Speed r.p.m.	Max. Load lbf/N	Weight oz/g
	Min.	Max									
HF2-250-P	0.2481	0.2490	2.25	1.75	1.13	0.44	0.19	0.28	6,020	490	1.0
HF2-312-P	0.3106	0.3115	2.25	1.75	1.13	0.44	0.19	0.28	4,820	340	1.0
HF2-375-P	0.3731	0.3740	2.25	1.75	1.13	0.63	0.19	0.28	4,010	340	1.4
HF3-500-P	0.4980	0.4990	3.25	2.50	1.63	0.78	0.25	0.41	3,010	1,020	3.5
HF3-625-P	0.6230	0.6240	3.25	2.50	1.63	0.88	0.25	0.41	2,410	700	4.2
HF3-750-P	0.7479	0.7491	3.25	2.50	1.63	0.88	0.25	0.41	2,010	700	3.5
HF5-1000-P	0.9979	0.9991	5.00	4.00	2.63	0.91	0.38	0.56	1,500	2,200	10.0
HF2-6M-P	5.978	5.990	57.0	44.5	28.5	11.0	5.0	7.0	3,820	2,200	28
HF2-8M-P	7.972	7.870	57.0	44.5	28.5	11.0	5.0	7.0	2,860	2,200	28
HF2-10M-P	9.977	9.870	57.0	44.5	28.5	15.9	5.0	7.0	2,290	2,200	40
HF2-12M-P	11.966	11.984	57.0	44.5	28.5	15.9	5.0	7.0	1,910	1,550	100
HF3-16M-P	15.966	15.984	82.5	63.5	41.5	20.0	6.5	10.5	1,430	3,110	120
HF3-18M-P	17.966	17.984	82.5	63.5	41.5	22.0	6.5	10.5	1,270	3,110	100
HF4-20M-P	19.959	19.980	102.0	79.5	47.5	22.0	8.0	10.5	1,900	6,250	190
HF5-25M-P	24.959	24.980	127.0	101.5	66.5	23.0	9.5	14.5	1,500	9,600	284

For more information about Spyraflo bearings visit www.spyraflo.com.