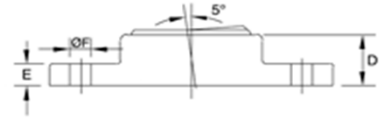
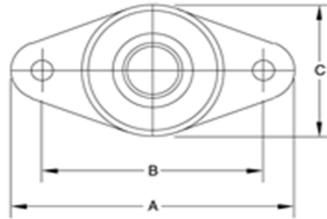


HOUSING-FLANGE, SELF-ALIGNING BRONZE BEARINGS



Spyraflo Aluminum Housing-Flanges combine the light weight, clean lines, and dimensional consistency of sintered aluminum with $\pm 5^\circ$ self-aligning and the medium load / medium speed capability of SAE 840 Bronze. Spyraflo Housing-Flanges are often able to replace larger, heavier cast iron ball bearing assemblies. The profile and performance of Spyraflo Housing-Flanges, is a very cost effective alternative to often expensive Housing-Flange mounting challenges.

SAE-840 Oil Impregnated Bronze Bearings are an economic solution for medium load / medium speed applications, 25% oil volume within the porous structure of the spherical insert ensures long bearing life.

- Maintenance free.
- Suitable for rotational and oscillatory motion.
- High / Low Temperature and Corrosion Resistant options available.
- Electrically conductive.
- Clean lines and Lightweight.

Part Number	ID Actual Min. Max	A	B	C	D	E	F	Max. Speed r.p.m.	Max. Load lbf/N	Weight oz/g
HF1-250-B	0.2508 - 0.2513	1.63	1.25	0.75	0.38	0.19	0.17	15,270	190	0.5
HF2-312-B	0.3133 - 0.3140	2.25	1.75	1.13	0.44	0.19	0.28	12,240	270	0.9
HF2-375-B	0.3758 - 0.3765	2.25	1.75	1.13	0.44	0.19	0.28	10,180	320	0.9
HF2-500-B	0.5010 - 0.5017	2.25	1.75	1.13	0.63	0.19	0.28	7,640	340	1.2
HF3-500-B	0.5010 - 0.5017	3.25	2.50	1.63	0.78	0.25	0.41	7,640	600	2.6
HF4-500-B	0.5010 - 0.5017	4.00	3.13	1.88	0.91	0.31	0.41	7,640	700	5.4
HF3-625-B	0.626 - 0.627	3.25	2.50	1.63	0.78	0.25	0.41	6,110	700	3.2
HF4-625-B	0.626 - 0.627	4.00	3.13	1.88	0.91	0.31	0.41	6,110	800	5.8
HF3-750-B	0.751 - 0.752	3.25	2.50	1.63	0.88	0.25	0.41	5,090	700	3.7
HF4-750-B	0.751 - 0.752	4.00	3.13	1.88	0.91	0.31	0.41	5,090	900	5.6
HF4-875-B	0.876 - 0.878	4.00	3.13	1.88	0.91	0.31	0.41	4,850	900	6.1
HF5-1000-B	1.001 - 1.003	5.00	4.00	2.63	0.91	0.38	0.56	4,500	1,600	9.4
HF5-1250-B	1.251 - 1.253	5.00	4.00	2.63	0.94	0.38	0.56	3,600	1,800	9.6
HF1-6M-B	6.02 - 6.04	41.5	32.0	19.0	9.5	5.0	4.5	16,110	790	14
HF2-8M-B	8.02 - 8.04	57.0	44.5	28.5	11.0	5.0	7.0	12,120	1,190	26
HF2-10M-B	10.02 - 10.04	57.0	44.5	28.5	11.0	5.0	7.0	9,700	1,490	26
HF2-12M-B	12.03 - 12.05	57.0	44.5	28.5	15.9	5.0	7.0	8,060	1,520	34
HF3-12M-B	12.03 - 12.05	82.5	63.5	41.5	20.0	6.5	7.0	8,060	1,480	75
HF3-15M-B	15.03 - 15.05	82.5	63.5	41.5	20.0	6.5	10.5	6,460	2,530	91
HF3-16M-B	16.03 - 16.05	82.5	63.5	41.5	20.0	6.5	10.5	5,500	3,110	92
HF3-18M-B	18.03 - 18.05	82.5	63.5	41.5	22.0	6.5	10.5	5,380	4,000	105
HF3-20M-B	20.03 - 20.05	82.5	63.5	41.5	22.0	6.5	10.5	5,200	4,000	98
HF4-20M-B	20.03 - 20.05	102.0	80.0	48.0	23.0	8.0	10.5	5,200	4,880	170
HF5-25M-B	25.03 - 25.07	127.0	101.5	66.5	23.0	9.5	14.5	4,600	7,260	266
HF5-30M-B	30.03 - 30.07	127.0	101.5	66.5	24.0	9.5	14.5	3,850	8,170	272

For more information about Spyraflo bearings visit www.spyraflo.com.

PO Box 2309 Peachtree City, GA 30269 Phone 800-487-7601 sales@spyraflo.com