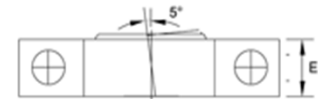
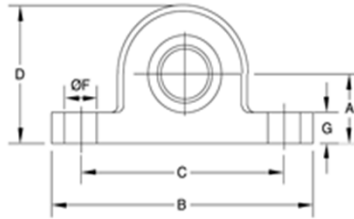


PILLOW-BLOCK, SELF-ALIGNING NEEDLE-ROLLER BEARINGS



Spyraflo Aluminum Pillow-Blocks combine the light weight, clean lines, and dimensional consistency of sintered aluminum with $\pm 5^\circ$ self-aligning and the high speed / medium load capability of Needle-Roller Bearings. Spyraflo Needle-Roller Pillow-Blocks are able to carry higher loads than larger, heavier cast iron ball bearing assemblies. The profile and performance of Spyraflo Pillow-Blocks, is a very cost effective alternative to often expensive Pillow-Block mounting challenges.

Needle-Roller Bearings are an economic solution for medium load / high speed applications.

- Requires a hardened shaft.
- Suitable for rotational motion.
- Pre-Lubricated
- Electrically conductive.
- Clean lines and Lightweight.

Part Number	Shaft Dia.		A	B	C	D	E	F	G	Max. Speed r.p.m.	Max. Load lbf/N	Weight oz/g
	Min.	Max										
PB1-250-N	0.2495	0.2500	0.56	2.25	1.75	1.125	0.44	0.28	0.25	44,000	210	1.00
PB1-312-N	0.3120	0.3125	0.56	2.25	1.75	1.125	0.63	0.28	0.25	35,500	210	1.60
PB1-375-N	0.3745	0.3750	0.56	2.25	1.75	1.125	0.63	0.28	0.25	29,500	220	1.60
PB2-500-N	0.4995	0.5000	0.75	3.25	2.50	1.56	0.78	0.34	0.31	22,000	380	3.50
PB2-625-N	0.6245	0.6500	0.75	3.25	2.50	1.56	0.88	0.34	0.31	17,600	330	4.20
PB4-750-N	0.7495	0.7500	1.25	5.00	4.00	2.56	0.91	0.56	0.56	14,700	1,000	10.50
PB1-6M-N	5.992	6.000	14.5	57.0	44.5	28.5	11.0	7.0	6.5	35,000	940	28
PB1-8M-N	7.991	8.000	14.5	57.0	44.5	28.5	16.0	7.0	6.5	28,000	940	45
PB1-10M-N	9.991	10.000	14.5	57.0	44.5	28.5	16.0	7.0	6.5	23,000	960	45
PB2-12M-N	11.989	12.000	19.0	82.5	63.5	39.5	20.0	8.7	8.0	20,000	1,700	100
PB2-15M-N	14.989	15.000	19.0	82.5	63.5	39.5	23.0	8.7	8.0	16,000	1,500	120
PB2-16M-N	15.989	16.000	19.0	82.5	63.5	39.5	23.0	8.7	8.0	16,000	1,500	120
PB4-18M-N	17.989	18.000	32.0	127.0	101	65.0	23.0	14.3	14.5	14,700	4,450	300

For more information about Spyraflo bearings visit www.spyraflo.com.