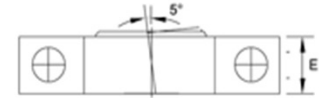
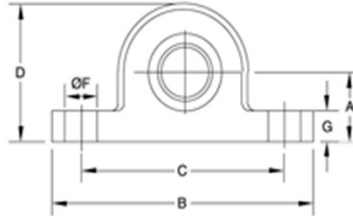
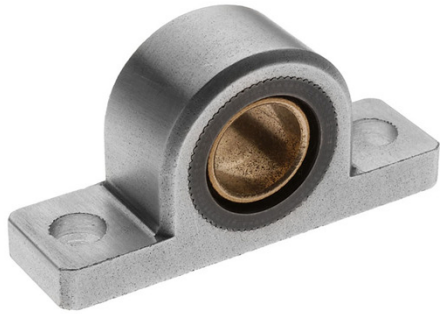




## PILLOW-BLOCK, SELF-ALIGNING BRONZE BEARINGS



Spyraflo Aluminum Pillow-Blocks combine the light weight, clean lines and dimensional consistency of sintered aluminum with  $\pm 5^\circ$  self-aligning and the medium load / medium speed capability of SAE 840 Bronze. Spyraflo Pillow-Blocks are often able to replace larger, heavier cast iron ball bearing assemblies. The profile and performance of Spyraflo Pillow-Blocks, is a very cost effective alternative to often expensive Pillow-Block mounting challenges.

SAE-840 Oil Impregnated Bronze Bearings are an economic solution for medium load / medium speed applications, 25% oil volume within the porous structure of the spherical insert ensures long bearing life.

- Maintenance free.
- Suitable for rotational and oscillatory motion.
- High / Low Temperature and Corrosion Resistant options available.
- Electrically conductive.
- Clean lines and Lightweight.

Part Number	ID Actual Min. Max	A	B	C	D	E	F	G	Max. Speed r.p.m.	Max. Load lbf/N	Weight oz/g
PB0-187-B	0.1883 - 0.1888	0.375	1.438	1.13	0.75	0.38	0.20	0.188	20,310	130	0.42
PB0-250-B	0.2508 - 0.2513	0.375	1.438	1.13	0.75	0.38	0.20	0.188	15,270	150	0.39
PB1-250-B	0.2508 - 0.2513	0.563	2.25	1.75	1.13	0.38	0.28	0.25	15,270	210	1.00
PB1-312-B	0.3133 - 0.3140	0.563	2.25	1.75	1.13	0.44	0.28	0.25	12,240	210	1.00
PB1-375-B	0.3758 - 0.3765	0.563	2.25	1.75	1.13	0.44	0.28	0.25	10,180	220	1.00
PB1-500-B	0.5010 - 0.5017	0.563	2.25	1.75	1.13	0.63	0.28	0.25	7,640	220	1.40
PB2-500-B	0.5010 - 0.5017	0.75	3.25	2.50	1.56	0.78	0.34	0.31	7,640	380	2.60
PB3-500-B	0.5010 - 0.5017	1.00	4.00	3.13	1.94	0.78	0.34	0.31	7,640	480	6.40
PB2-625-B	0.626 - 0.627	0.75	3.25	2.50	1.94	0.78	0.34	0.31	6,110	380	3.40
PB3-625-B	0.626 - 0.627	1.00	4.00	3.13	1.94	0.78	0.34	0.31	6,110	480	3.50
PB2-750-B	0.751 - 0.752	0.75	3.25	2.50	1.56	0.88	0.34	0.31	5,090	330	4.20
PB3-750-B	0.751 - 0.752	1.00	4.00	3.13	1.94	0.91	0.34	0.31	5,090	480	5.90
PB3-875-B	0.876 - 0.878	1.00	4.00	3.13	1.94	0.91	0.34	0.41	4,850	380	6.70
PB4-1000-B	1.001 - 1.003	1.25	5.00	4.00	2.56	0.91	0.56	0.56	4,500	1000	10.00
PB4-1250-B	1.251 - 1.253	1.25	5.00	4.00	2.56	0.94	0.56	0.56	3,600	1000	11.00
PB0-6M-B	6.02 - 6.04	9.50	34.5	28.5	19.0	9.5	5.0	5.0	16,110	800	12
PB1-6M-B	6.02 - 6.04	14.5	57.0	44.5	28.5	9.5	7.0	6.5	16,110	940	28
PB1-8M-B	8.02 - 8.04	14.5	57.0	44.5	28.5	11.0	7.0	6.5	12,120	960	28
PB1-10M-B	10.02 - 10.04	14.5	57.0	44.5	28.5	11.0	7.0	6.5	9,700	960	28
PB1-12M-B	12.03 - 12.05	14.5	57.0	44.5	28.5	16.0	7.0	6.5	8,060	960	40
PB2-12M-B	12.03 - 12.05	19.0	82.5	63.5	39.5	20.0	9.0	8.0	8,060	1700	60
PB2-15M-B	15.03 - 15.05	19.0	82.5	63.5	39.5	20.0	9.0	8.0	6,460	1700	74
PB2-16M-B	16.03 - 16.05	19.0	82.5	63.5	39.5	20.0	9.0	8.0	5,500	1700	180
PB2-18M-B	18.03 - 18.05	19.0	82.5	63.5	39.5	23.0	9.0	8.0	5,380	1500	96
PB2-20M-B	20.03 - 20.08	19.0	82.5	63.5	39.5	23.0	9.0	8.0	5,200	1500	100
PB4-25M-B	25.03 - 25.07	32.0	127.0	101.5	65.0	23.0	14.0	14.5	4,600	4450	285
PB4-30M-B	30.03 - 30.07	32.0	127.0	101.5	65.0	24.0	14.0	14.5	3,850	4450	312

For more information about Spyraflo bearings visit [www.spyraflo.com](http://www.spyraflo.com).

PO Box 2309 Peachtree City, GA 30269 Phone 800-487-7601 [sales@spyraflo.com](mailto:sales@spyraflo.com)