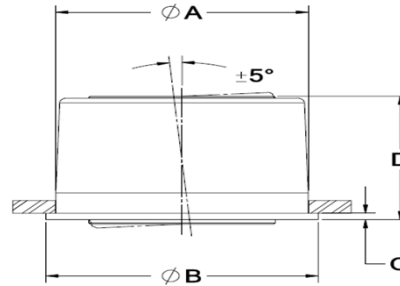




PRESS-FIT, SELF-ALIGNING DELRIN BEARINGS



Spyraflo's Press-Fit retainers allow non-metallic assemblies and housings to benefit from $\pm 5^\circ$ self-aligning. Steel side frame applications requiring serviceability are also ideally suited for the press-fit retainer.

Delrin® acetyl bearings are an economic solution for light load / low speed rotary and linear applications.

- Maintenance free.
- Suitable for rotational, linear and oscillatory motion.
- The steel retainer absorbs the installation forces with zero effect on the bearing ID.
- Also available in Delrin®-AF for higher speed applications.

Refer to the Installation section on www.spyraflo.com for installation instructions.

Part Number	ID Actual Min. Max.	Max. Load lbf/N	Max. Speed r.p.m.	Mounting Hole A	B	C	D	Weight oz/g
PSD-125	0.1260 - 0.1280	33	3,006	0.34	0.41	0.03	0.27	0.10
PSD-187	0.1885 - 0.1905	68	2,010	0.50	0.56	0.03	0.38	0.20
PSD-250	0.2510 - 0.2530	91	1,503	0.50	0.56	0.03	0.38	0.10
PSD-312	0.3135 - 0.3155	129	1,205	0.63	0.69	0.03	0.43	0.20
PSD-375	0.3760 - 0.3780	155	1,002	0.63	0.69	0.03	0.43	0.20
PSD-500	0.5010 - 0.5040	308	752	0.81	0.88	0.03	0.60	0.30
PSD-625	0.6260 - 0.6280	436	601	1.06	1.12	0.03	0.77	0.80
PSD-4M	4.020 - 4.070	255	2,386	12.70	14.2	0.75	9.6	3
PSD-6M	6.020 - 6.070	383	1,591	12.70	14.2	0.75	9.6	6
PSD-8M	8.030 - 8.080	580	1,193	15.90	17.4	0.75	10.8	5
PSD-10M	10.030 - 10.080	725	955	15.90	17.4	0.75	10.8	4
PSD-12M	12.030 - 12.080	1,295	795	20.60	22.2	0.75	14.9	9
PSD-15M	15.030 - 15.080	1,831	636	27.00	28.5	0.75	19.6	23
PSD-16M	16.030 - 16.080	1,953	597	27.00	28.5	0.75	19.6	23

For more information about Spyraflo bearings visit www.spyraflo.com.