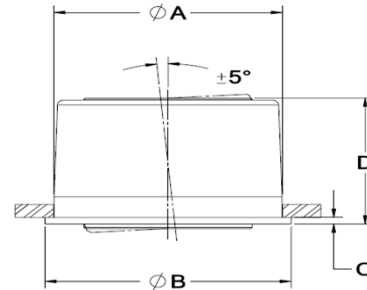


PRESS-FIT, SELF-ALIGNING NEEDLE ROLLER BEARINGS



Spyraflo's Press-Fit retainers allow non-metallic assemblies and housings to benefit from $\pm 5^\circ$ self-aligning. Steel side frame applications requiring serviceability are also ideally suited for the press-fit retainer. Needle-Roller Bearings are an economic solution for medium load / high speed applications.

- Requires a hardened shaft.
- Suitable for rotational motion.
- Pre-Lubricated.
- The steel retainer absorbs the installation forces with zero effect on the bearing ID.

Refer to the Installation section on www.spyraflo.com for installation instructions.

Part Number	Shaft Dia. Min. Max.	Max. Load lbf/N	Max. Speed r.p.m.	Mounting Hole A	B	C	D	Weight oz/g
PSN-125	0.1247 - 0.1250	360	31,500	0.500	0.56	0.03	0.37	0.20
PSN-187	0.1872 - 0.1875	430	21,000	0.625	0.69	0.03	0.43	0.40
PSN-250	0.2495 - 0.2500	430	44,000	0.625	0.69	0.03	0.43	0.83
PSN-312	0.3120 - 0.3125	600	35,500	0.812	0.88	0.03	0.60	0.74
PSN-375	0.3745 - 0.3750	600	29,500	0.812	0.88	0.03	0.60	0.64
PSN-500	0.4995 - 0.5000	950	22,000	1.063	1.13	0.03	0.77	1.48
PSN-625	0.6245 - 0.6250	1,830	17,600	1.250	1.31	0.03	0.85	2.38
PSN-4M	3.992 - 4.000	1,780	41,000	15.90	17.4	0.75	10.8	11
PSN-6M	5.992 - 6.000	1,830	35,000	15.90	17.4	0.75	10.8	10
PSN-8M	7.991 - 8.000	1,830	28,000	20.60	22.2	0.75	15.2	22
PSN-10M	9.991 - 10.000	2,550	23,000	20.60	22.2	0.75	15.2	20
PSN-12M	11.989 - 12.000	2,550	20,000	27.00	28.5	0.75	19.6	44
PSN-15M	14.989 - 15.000	7,800	16,000	31.80	33.3	0.75	21.6	66
PSN-16M	15.989 - 16.000	7,800	16,000	31.80	33.3	0.75	21.6	66

For more information about Spyraflo bearings visit www.spyraflo.com.