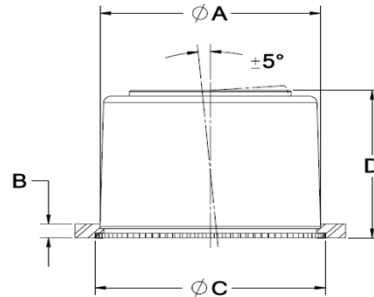




SELF-CLINCHING, SELF-ALIGNING BRONZE BEARINGS



Spyraflo's patented self-clinching, self-aligning bearings have helped OEM engineers the world over solve some tough challenges. The proprietary self-clinching bearing technology makes secure mounting in panels sometimes as thin as 0.04" fast and easy. The $\pm 5^\circ$ self-aligning bearing feature reduces machining time and simplifies the OEM assembly process as well as increasing bearing durability and life.

SAE-840 Oil Impregnated Bronze Bearings are an economic solution for medium load / medium speed applications, 25% oil volume within the porous structure of the spherical insert ensures long bearing life.

- Maintenance free.
- Stainless Steel option.
- The steel retainer absorbs the installation forces with zero effect on the bearing ID.
- Flange-Mount option.
- Suitable for rotational and oscillatory motion.
- Installation is equally successful on thin sheet steel or thick panels.
- Electrically conductive.

Refer to the Installation section on www.spyraflo.com for installation instructions.

Part Number	Part Number	ID Actual Min. Max.	Max. Load Steel - lbf/N	Max. Load S.Steel - lbf/N	Max. Speed r.p.m.	Mounting Hole A	Min. Panel Thickness B	Min. CL to Edge	C	D	Weight oz/g
FSB-125	FSSB-125	0.1255 - 0.1260	70	70	30,550	0.344	0.040	0.240	0.39	0.29	0.1
FSB-187	FSSB-187	0.1883 - 0.1888	190	190	20,310	0.500	0.040	0.380	0.55	0.40	0.2
FSB-250	FSSB-250	0.2508 - 0.2513	360	210	15,270	0.500	0.040	0.380	0.55	0.40	0.2
FSB-312	FSSB-312	0.3133 - 0.3140	430	270	12,240	0.625	0.060	0.450	0.67	0.46	0.3
FSB-375	FSSB-375	0.3758 - 0.3765	430	270	10,180	0.625	0.060	0.450	0.67	0.46	0.3
FSB-500	FSSB-500	0.5010 - 0.5017	600	350	7,640	0.812	0.060	0.500	0.87	0.64	0.6
FSB-625	FSSB-625	0.6260 - 0.6270	1650	950	6,110	1.063	0.075	0.750	1.10	0.77	1.4
FSB-750	FSSB-750	0.7510 - 0.7520	2000	1,150	5,090	1.250	0.090	0.750	1.30	0.89	2.1
FSB-1000	FSSB-1000	1.001 - 1.003	2600	1,500	4,600	1.583	0.090	1.125	1.63	0.90	3.3
FSB-1250	FSSB-1250	1.251 - 1.253	4400	2,400	3,880	1.835	0.120	1.250	1.89	0.95	4.5
FSB-4M	FSSB-4M	4.010 - 4.030	800	800	24,170	12.70	1.0	9.5	14.0	10.2	6
FSB-6M	FSSB-6M	6.020 - 6.040	1530	890	16,110	12.70	1.0	9.5	14.0	10.2	5
FSB-8M	FSSB-8M	8.020 - 8.040	1850	1,150	12,120	15.90	1.5	11.5	17.0	11.5	9
FSB-10M	FSSB-10M	10.020 - 10.040	1850	1,150	9,700	15.90	1.5	11.5	17.0	11.5	7
FSB-12M	FSSB-12M	12.030 - 12.050	2550	1,480	8,060	20.60	1.5	12.7	22.0	16.3	19
FSB-15M	FSSB-15M	15.030 - 15.050	7000	4,030	6,460	27.00	2.0	19.0	28.0	19.4	41
FSB-16M	FSSB-16M	16.030 - 16.050	7000	4,030	5,500	27.00	2.0	19.0	28.0	19.4	41
FSB-18M	FSSB-18M	18.030 - 18.050	8500	4,880	5,380	31.80	2.3	19.0	33.0	22.5	65
FSB-20M	FSSB-20M	20.030 - 20.050	8500	4,880	5,200	31.80	2.3	19.0	33.0	22.5	65
FSB-25M	FSSB-25M	25.030 - 25.070	11050	7,000	4,600	40.21	2.5	28.5	41.4	22.5	95
FSB-30M	FSSB-30M	30.02 - 30.07	18750	10,300	3,880	46.60	3.0	32.0	48.0	24.0	110

For more information about Spyraflo bearings visit www.spyraflo.com.